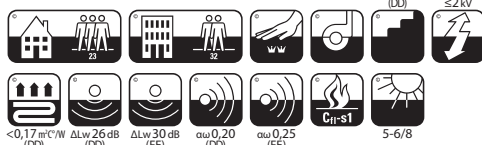




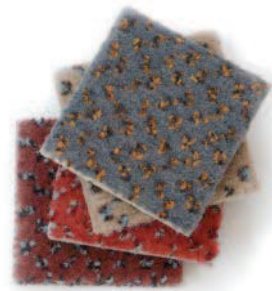
UPEC
CSTB
U3P3E1C0
04/035 (DD)
05/213-02 (FE)



DGNB
NAVIGATOR
Registration Code
EN COURS
www.dgnb.org

REG NR
21EC095F
www.pro-dfs.info
(DD)

REG NR
C85BBE5E
www.pro-dfs.info
(FE)



Balsan
protect
www.balsan.com/balsanprotect

Balsan
silvercare
www.balsan.com/silvercare

BALSAN
Airtouch
Z-156.601-595
TIFI
(DD)

ÉMISSIONS DANS L'AIR INTÉRIEUR
A+
A+ A B C

Structure	Moquette à velours Cross-Over Cut	Envers (DD)	Double dossier	Largeur à la pièce	
Construction	Tufted carpet, Cross-Over Cut pile	Backing	Action back	Width in roll	
Herstellungsverfahren	Getufteter Cross-Over Cut	Rückenausstattung	Textilrücken	Lieferbreite in Rolle	
Fabricagemetode	Getuft tapij, Cross Over gesneden pool	Rug	Textielrug	Rollbreedte	4 m
Descripción	Moqueta de fibra Cross-Over Cut	Soporte	Doble soporte textil	Ancho por pieza	
Struttura	Moquette velluto Cross-Over Cut	Sottofondo	Doppio supporto	Larghezza rotolo	
Struktura	Wykładzina strzyżona typu Cross-Over	Podkład	Action back	Szerokość w rolce	

Composition	100% Polyamide	Envers (FE)	Double dossier feutre Confort +	Largeur à la coupe	
Pile material	100% Polyamid	Backing	Feltback confort +	Width in cut-length	
Polmaterial	100% Polyamid	Rückenausstattung	Vliesrücken Confort +	Lieferbreite in Coupon	4 m
Poolmateriaal	100% Polyamide	Rug	Vilrug comfort +	Couponbreedte	
Composició	100% Poliamida	Soporte	Doble soporte textil fieltro Confort+	Ancho por trozo	
Composizione	100% Poliammide	Sottofondo	Doppio supporto Confort+	Larghezza taglio	
Skład runa	100% Poliamid	Podkład	Podkład filcowy Confort+	Szerokość w kuponie	

Poids de velours		Comportement au feu	Cfj-s1 - collé sur ciment	Nombre de coloris	
Pile weight		Fire resistance	Cfj-s1 - glued on cement	Colours	
Poleinsatzgewicht		Brennverhalten	Cfj-s1 - geklebt auf Zement	Erhältliche Farben	28 (DD)
Poolinzetmassa	830 g/m ²	Brandgedrag	Cfj-s1 - verlijmd op cement	Kleurenaantal	7 (FE)
Peso fibra		Clasificación al fuego	Cfj-s1 - pegado en cemento	Cantidad de colores	
Peso felpa		Comportamento al fuoco	Cfj-s1 - incollato su cemento	Numero colori	
Gramatura		Trudnozapałość	Cfj-s1 - klejone na podłożu betonowym	Liczba kolorów	

Poids total - NF ISO 8543		Classement		Pose / Entretien / Traitement	
Total weight		Wear classification	U3P3E1C0	Laying / Cleaning / Treatment	
Gesamtgewicht	1 820 g/m ² (DD)	Beanspruchung	Classe 23/32 LC2	Verlegehinweis / Reinigung / Behandlung	
Totaal gewicht	1 975 g/m ² (FE)	Gebruiksklasse	PRODIS N° 21EC095F (DD)	Plaatsinstructie / Reiniging / Onderhoud	www.balsan.com
Peso total		Clasificación	PRODIS N° C85BBE5E (FE)	Instalación / Mantenimiento / Tratamiento	
Peso totale		Classificazioni	AgBB N° Z-156.601-595 (DD)	Posa / Manutenzione / Trattamenti	
Masa całkowita		Klasyfikacja		Układanie / Utrzymanie w czystości / Impregnacja	

Épaisseur totale - NF ISO 1765		HQE	Ce produit répond parfaitement à 8 des 14 cibles	BALSAN se réserve le droit de modifier les caractéristiques de ce produit tout en conservant les mêmes qualités techniques.
Total thickness		HQE	This product meets perfectly 8 from the 14 targets	Dans le cadre d'une utilisation professionnelle, il est fortement conseillé d'utiliser des coloris moyens et foncés pour les pièces à grand trafic. De légères variations de coloris peuvent être observées entre les différents bords de teinture.
Gesamtdicke	6,5 mm (DD)	HQE	Dieses Produkt erfüllt 8 von den 14 Zielen	BALSAN reserves the right to modify the characteristics of this product while keeping the same technical properties. In the context of business use, we strongly recommend the use of darker colours for heavy traffic areas. Slight differences in colour may occur between different dye baths.
Totale massa	8,5 mm (FE)	HQE	Dit product beantwoordt aan 8 van de 14 doelstellingen	BALSAN behält sich das Recht vor, die Beschaffenheit dieses Artikels zu verändern, dabei jedoch die gleichen technischen Eigenschaften beizubehalten. In gewerblich stark beanspruchten Räumen empfehlen wir mittlere bis dunkle Farben. Zwischen den verschiedenen Farbbädern kann es zu leichten Farbabweichungen kommen.
Altura total		HQE	Este producto responde perfectamente a 8 de los 14 objetivos	BALSAN behoudt zich het recht voor de kenmerken van het product te wijzigen, weliswaar met behoud van de technische eigenschappen. Bij project toepassingen, adviseren we sterk het gebruik van donkere kleuren voor zwaar belopen omgevingen. Er kan een lichte variatie in kleur optreden tussen de verschillende kleurbaden.
Spessore totale		HQE	Questo prodotto risponde perfettamente a 8 di 14 target	BALSAN se reserva el derecho a modificar las especificaciones arriba referenciadas. En el contexto de uso industrial o comercial, recomendamos los colores oscuros para las zonas de tráfico intenso. Se pueden observar ligeras variaciones de color entre los distintos baños de tinte.
Wysokość całkowita		HQE	Ten produkt odpowiada 8 z 14 kryteriów	BALSAN si riserva il diritto di modificare le caratteristiche del prodotto in qualsiasi momento mantenendo la stessa qualità tecnica. Per l'uso di tipo contract si consigliano colori scuri/melanizzati per le zone ad alto traffico. Tra i diversi bagni di tintura si possono osservare leggere variazioni di tinta.

Hauteur du velours - NF ISO 1766		Isolation aux bruits d'impacts - NF EN ISO 140-8		Direct access with smartphone
Pile height		Impact sound insulation		
Polhöhe	3,7 mm (DD)	Trittschalldämmung	ΔLw 26 dB (DD)	
Poolhoogte	4,4 mm (FE)	Geluidsreductie	ΔLw 30 dB (FE)	
Altura fibra		Aislamiento a los ruidos de impactos		
Spessore felpa		Rumore all'impatto		
Wysokość runa		Izolacja hałasu uderzeniowego		

Jauge - Serrage (points) - Densité - NF ISO 3763		Absorption aux bruits aériens - NF EN ISO 11654		Échantillons gratuits et documentation
Gauge - Rows (points) - Tufts		Sound absorption		Free samples and documentation
Teilung - Stiche (points) - Noppenzahl	1/10 ^e	Schallabsorptionsgrad		www.balsan.com
Rijen - Deling (points) - Noppenaantal	53 p	Geluidsabsorptie	αw 0,20 (DD)	
Galga - Densidad (puntos)	209 350 p/m ²	Absorción de los ruidos aéreos	αw 0,25 (FE)	
Scartamento - Serraggio (punti) - Densità felpa		Isolazione acustica		
Zacieśnienie - Rozstaw igiel (punkty) - Gęstość		Pochłanianie dźwięku		

f/Hz	125	250	500	1000	2000	4000
Qs (DD)	0,01	0,03	0,11	0,21	0,44	0,65
Qs (FE)	0,06	0,05	0,20	0,52	0,57	0,59

Balsan
BALSAN



Balsan - 2, Corbilly - F-36330 ARTHON
Tél. +33 254 29 16 00 - Fax +33 254 36 79 08
balsan.moquette@balsan.com
www.balsan.com



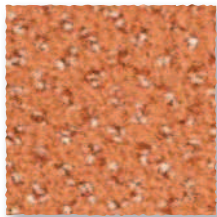



SIGNATURE / SIGNATURE CONFORT +

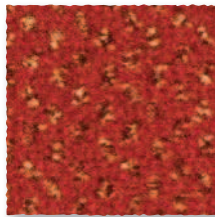


Existe aussi en dalle  dans certains coloris sous le nom Impression
Available also in carpet tile  in certain colours and called Impression

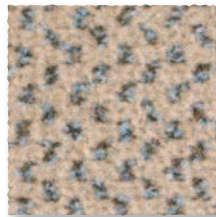
Agit naturellement contre les bactéries et les acariens.
Naturally fights bacteria and dust mites.



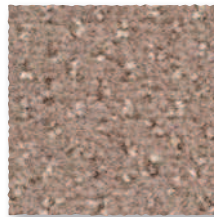
Tanger 445 DD 4 m
L 53,2 - ρ 21,2* 



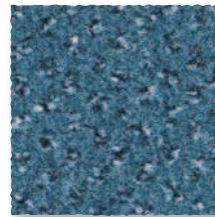
Coquelicot 567 DD+Fe 4 m
L 31,6 - ρ 6,9* 




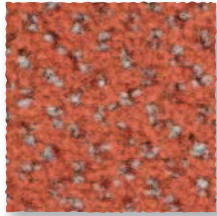
Calcaire 605 DD 4 m
L 56,2 - ρ 24,1* 




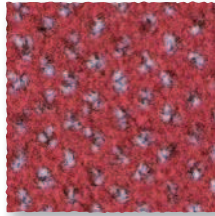
Marmotte 770 DD 4 m
L 49,1 - ρ 17,7* 



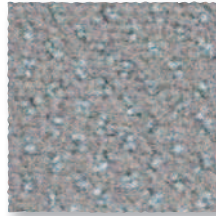
Fjord 166 DD 4 m
L 39,1 - ρ 10,7* 



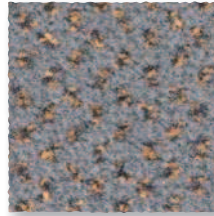
Brique 470 DD 4 m
L 41,4 - ρ 12,1* 



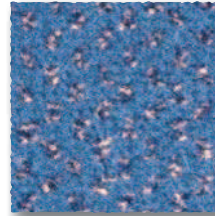
Fuchsia 590 DD 4 m
L 31,6 - ρ 6,9* 



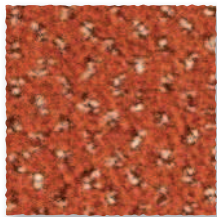
Loup 915 DD 4 m
L 50,7 - ρ 19* 




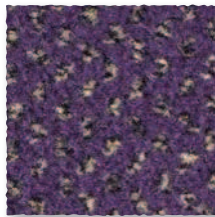
Étain 910 DD 4 m
L 44,5 - ρ 14,2* 



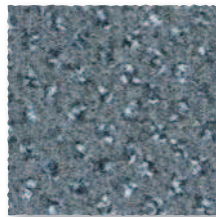
Chardon 180 DD 4 m
L 42,2 - ρ 12,6* 



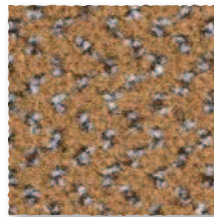
Tabasco 465 DD 4 m
L 38,4 - ρ 10,3* 



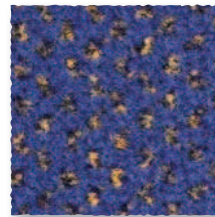
Prune 879 DD 4 m
L 31,6 - ρ 6,9* 



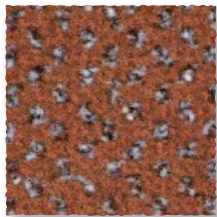
Grillon 980 DD+Fe 4 m
L 44,1 - ρ 13,9* 



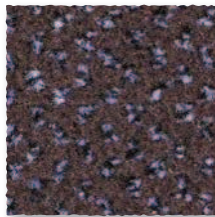
Camel 769 DD 4 m
L 41,1 - ρ 11,9* 



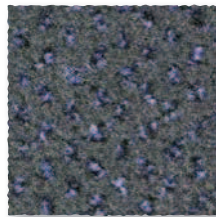
Navy 167 DD 4 m
L 33,8 - ρ 7,9* 




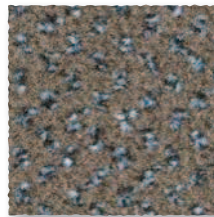
Cacao 760 DD 4 m
L 36,2 - ρ 9,1* 



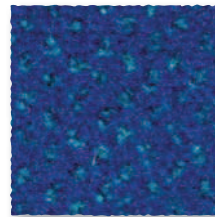
Ébène 790 DD+Fe 4 m
L 24,3 - ρ 4,2* 



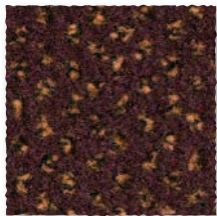
Orage 970 DD+Fe 4 m
L 31,8 - ρ 7* 



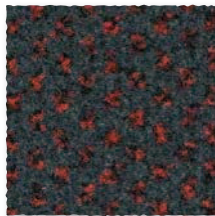
Taupe 780 DD+Fe 4 m
L 37,8 - ρ 10* 



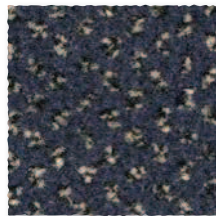
Cobalt 179 DD 4 m
L 29,4 - ρ 6* 



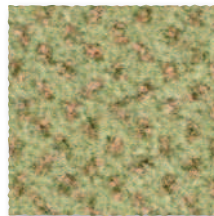
Bourgogne 786 DD 4 m
L 22,7 - ρ 3,7* 



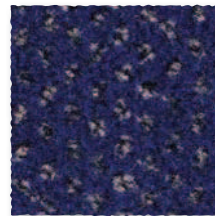
Réglisse 996 DD 4 m
L 21,9 - ρ 3,5* 



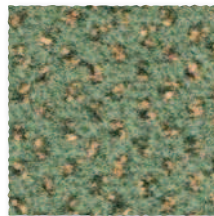
Onyx 992 DD+Fe 4 m
L 27,8 - ρ 5,4* 



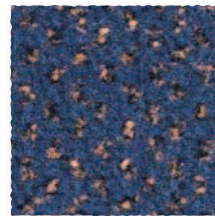
Anis 230 DD 4 m
L 49,6 - ρ 18,1* 




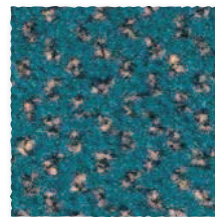
Marine 193 DD 4 m
L 26,7 - ρ 5* 



Amande 267 DD 4 m
L 43,9 - ρ 13,8* 



Prusse 192 DD+Fe 4 m
L 30,6 - ρ 6,5* 



Thuya 282 DD 4 m
L 32,7 - ρ 7,4* 

