



# MIPOLAM ACCORD

[gerflor.com](http://gerflor.com)



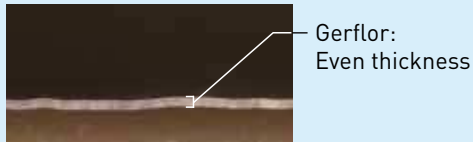
**Gerflor**<sup>®</sup>  
theflooringgroup

# evercare™ SURFACE TREATMENT

EXCLUSIVE PATENTED TECHNOLOGY BY GERFLOR

## THE BEST CHEMICAL STAIN RESISTANCE SURFACE TREATMENT

evercare™ BY GERFLOR : Treatment durability



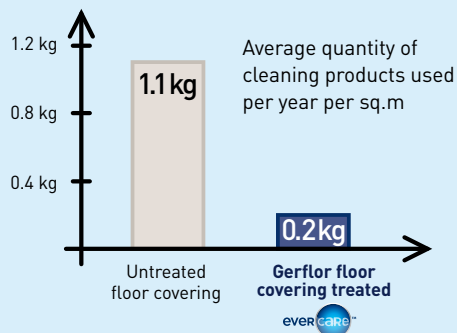
Other treated floor covering



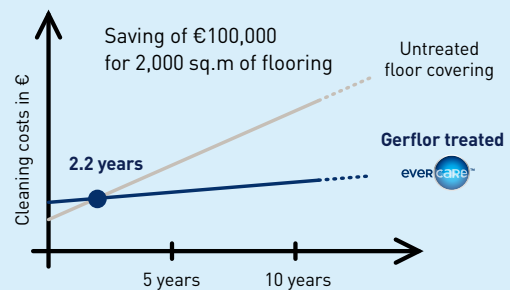
## SIMPLE & EASY STAIN REMOVAL



## EASY AND COST EFFECTIVE MAINTENANCE



► 80% less water and detergent use for cleaning



► 30% savings on maintenance costs

## USER'S BENEFITS

- | Easy & cost-effective maintenance
- | No wax for life

- | Stain barrier
- | Chemical resistance

# MIPOLAM ACCORD

## Performances and benefits



Homogeneous vinyl flooring suitable for heavy duty traffic areas



Semi-directional design available in 28 references



Available in 2m sheet (also available in tiles 608 x 608 mm on demand)



Excellent abrasion resistance



Matt finish surface: enhanced design & colour, long lasting appearance



Highly flexible homogeneous flooring, easy to install & weld

Don't forget our complementary ranges!



Handrails



Wall Coverings & Protections



Entrance mats



Skirtings & Profiles

## FEWER VOC'S, BETTER INDOOR AIR QUALITY



### INDOOR AIR QUALITY

- TVOC emissions 100 times lower than norm requirements (TVOC < 10 µg/m<sup>3</sup> after 28 days)
- Floorscore certified
- M1 certified
- Comply with AgBB protocol
- No formaldehyde emission



### COMPOSITION

#### 100% REACH compliant

- FREE of formaldehyde
- FREE of heavy metals
- FREE of solvent



### RECYCLABILITY

- 100% recyclable product



### RECYCLED CONTENT

- 25% recycled content
- 100% REACH compliant recycled content



### LCA

- Eco-designed according to a product specific Life Cycle Analysis
- Product specific EPD (Environmental Products Declaration) available
- Manufactured in an Iso 14001 and Iso 50001 certified site
- Contribution to many Green Building Schemes (LEED, HQE, BREEAM...)
- Patented surface treatment Evercare™ to reduce drastically the use of chemical products and water and ensure the lowest environmental impact



### WELLNESS

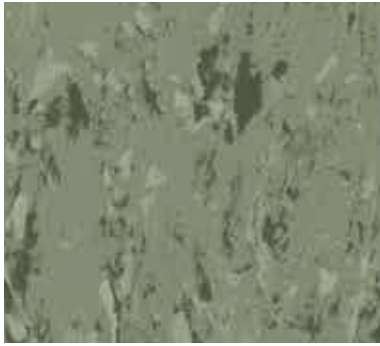
#### Health

- Antibacterial activity (inhibits growth > 99%)

#### Comfort

- Walking comfort < 75 dB

# MIPOLAM ACCORD



**0457 Como**  
NCS:5010-G30Y / LRV: 23,2



**0332 Dore**  
NCS: 1030-Y20R / LRV: 56,8



**0315 Orange River**  
NCS: 2570-Y50R / LRV: 19,2



**0448 Bandak**  
NCS: 5030-R / LRV: 10,1



**0447 Grunsee**  
NCS: 1040-G50Y / LRV: 48,8





**0303 Manitoba**  
NCS: 1005-Y40R / LRV: 68,8



**0301 Louise**  
NCS: 1005-Y30R / LRV: 64,4



**0305 Light Sand**  
NCS: 1505-Y20R / LRV: 64



**0324 Sand**  
NCS: 2010-Y20R / LRV: 52,1



**0441 Loch Ness**  
NCS: 3005-Y20R / LRV: 42



**0443 Krumme**  
NCS: 4010-G90Y / LRV: 25,1



**0425 Cork**  
NCS: 3030-Y30R / LRV: 32,4



**0463 Bourget**  
NCS: 5005-Y50R / LRV: 24,9



**0445 Otto**  
NCS: 7005-Y50R / LRV: 9,4

# MIPOLAM ACCORD



**0321 Salt**  
NCS: 1500-N / LRV: 67,1



**0320 Ontario**  
NCS: 4502-B / LRV: 33,1



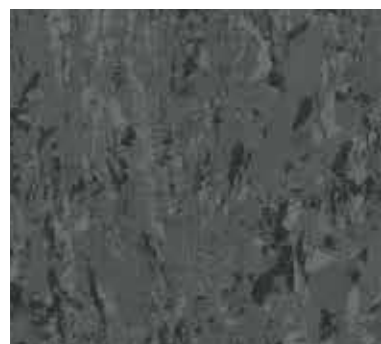
**0450 Thames**  
NCS: 5010-B10G / LRV: 19,9



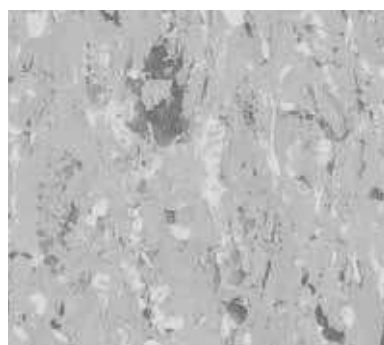
**0312 Powell**  
NCS: 2000-N / LRV: 56,3



**0310 Huron**  
NCS: 3005-R80B / LRV: 46,3



**0459 Mississippi**  
NCS: 7000-N / LRV: 10,8



**0319 Toba**  
NCS: 2502-G / LRV: 43



**0330 Kruger**  
NCS: 5000-N / LRV: 26,8



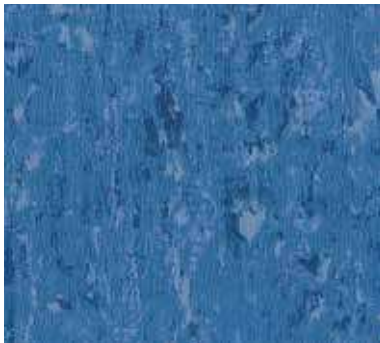
**0360 Balaton**  
NCS: 8500-N / LRV: 6,7



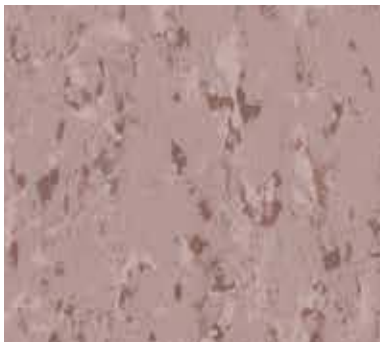
**0306 Inari**  
NCS: 1515-R90B / LRV: 53,6



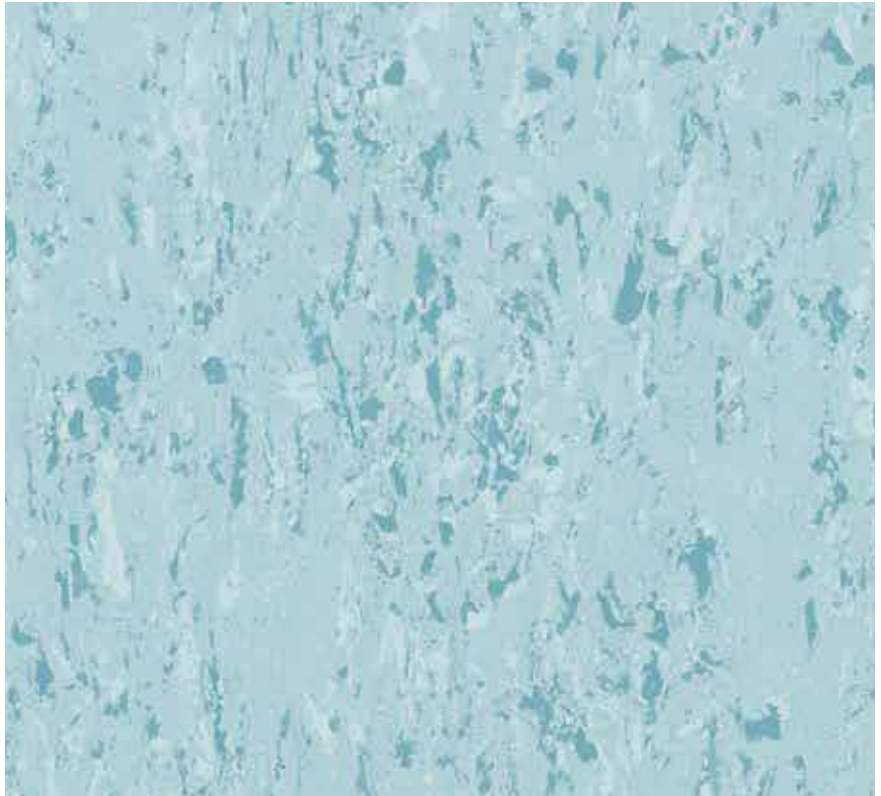
**0316 Malaren**  
NCS: 3020-R90B / LRV: 31,9



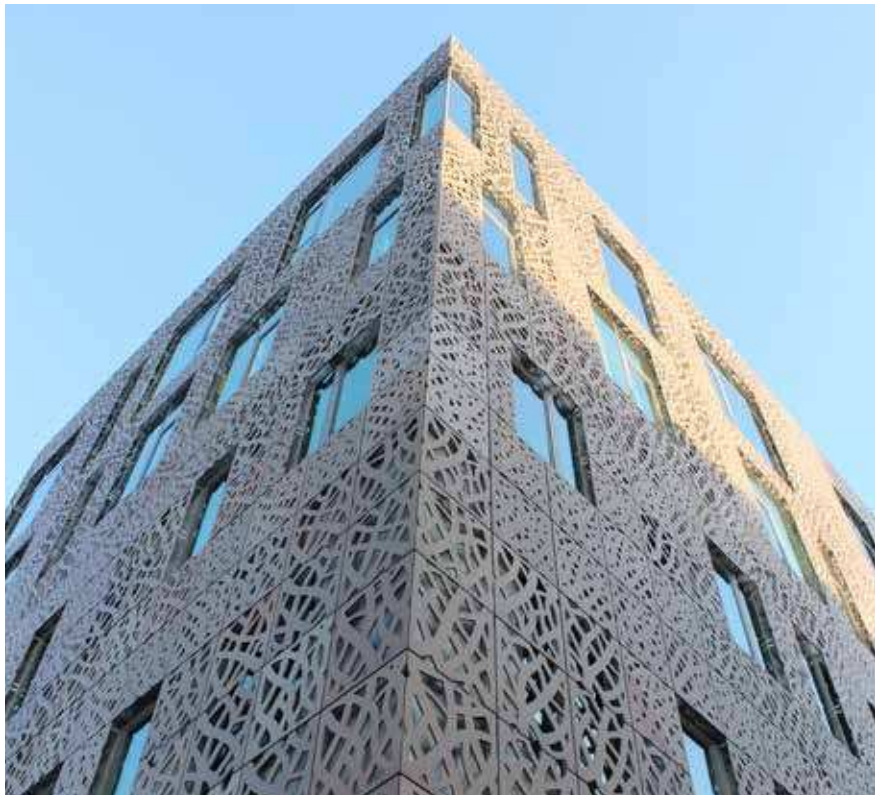
**0346 Roxen**  
NCS: 4040-R90B / LRV: 16,1



**0437 Flamingo Resort**  
NCS: 3010-R / LRV: 30,7



**0417 Constance**  
NCS: 2020-B30G / LRV: 51,5



## Mipolam Accord

### DESCRIPTION

Total thickness	EN ISO 24346 (EN 428)	mm	2.00
Weight	EN ISO 23997 (EN 430)	g/sq.m	2850
Width/length of sheet	EN ISO 24341 (EN 426)	cm/lm	200/20
Tile size	EN ISO 24342 (EN 427)	mm	608 x 608 <sup>(1)</sup>
Number of tiles per package	-	-	20

### CLASSIFICATION

Norm/product specification	-	-	EN ISO 10581 (EN 649)
European classification	EN ISO 10874 (EN 685)	class	34-43
Fire rating	EN 13501-1	class	Bfl - s1
Static electrical propensity	EN 1815	kV	< 2

### PERFORMANCE

Wear resistance	EN 660.2	mm <sup>3</sup>	≤ 2.0
Wear group	NF 189	group	T
Type binder content	ISO 10581	type	I
Dimensional stability	EN ISO 23999 (EN 434)	%	Sheet ≤ 0.40 - Tile ≤ 0.25
Residual indentation	EN ISO 24343-1 (EN 433)	mm	≈ 0.02
Castor chair test (type W)	ISO 4918 (EN 425)	-	OK
Thermal conductivity	EN ISO 10456 (EN12524)	W/(m.K)	0.25
Colour fastness	EN 20 105 - B02	degree	≥ 6
Surface treatment	-	-	Evercare™
Chemical resistance	EN ISO 26987 (EN 423)	class	OK
Anti-bacterial activity [E. coli - S. aureus - MRSA] <sup>(2)</sup>	ISO 22196	-	> 99 % inhibits growth

### ENVIRONMENT / INDOOR AIR QUALITY

TVOC after 28 days	ISO 16000-6	µg/m <sup>3</sup>	< 10
Certification	-	-	Floorscore™

### CE marking

CE	EN 14041	-	
		-	

(1) Products available in tiles for a minimum quantity order of 500 sq.m  
 (2) The implementation of an effective cleaning method is the best defence against infection

Installation and Maintenance Guidelines, Complementary ranges available on our Gerflor website.

Rubber leaves indelible stains on vinyl floorings: do not use mats with rubber backing and replace tubular furniture feet with those made of PVC or polyamide. Place mats of sufficient length at entrances to reduce outside sources of dirt.

**IMPORTANT:** The information contained in this document is valid from 30/04/2017 and is subject to change at any time without notice. In the context of constantly changing technology, our customers are responsible, prior to any use, for checking with us that this document is the version in force.

Product description and technical data sheet available in various languages. See our Gerflor Country websites.

## MIPOLAM ACCORD, LESS SPEAKING FOR MORE ACTIONS

 <b>COMPOSITION</b> 100% REACH compliant	 <b>INDOOR AIR QUALITY</b> 100 times lower than norm requirements (TVOC < 10µg/m <sup>3</sup> after 28 days)	 <b>RECYCLED CONTENT</b> 25%	 <b>RECYCLABILITY</b> 100%	 <b>LCA</b> Eco-designed according to a product specific life cycle analysis	 <b>WELLNESS</b> Walking comfort < 75 dB
--	--	------------------------------------	----------------------------------	--	--

Be CONNECTED!

www.gerflor.com