

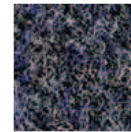


Fibre bonded contract floor covering
100% PA

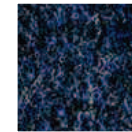


TECHNICAL DATA

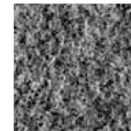
Tapisom Modul 418700505-XXXXX



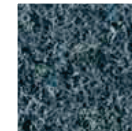
00003



00005



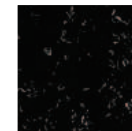
00004



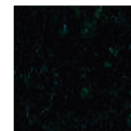
00001



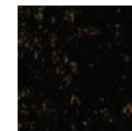
00006



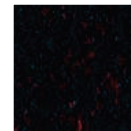
00008



00007



00010



00009



00002

TAPISOM MODUL	
SPECIFICATION	N°418700505-XXXXX
Dimensions / Dimensions / Dimensiones	50x50 cm Tiles
Type de revêtement / Type of flooring / Descripción	Aiguilleté plat en dalles / Flat needle felt in tiles / Punzonado en losetas
Composition de la couche de surface / Fibre composition of use surface / Composición	45% PA, 30% PP, 25% PES
Poids total du velours / Total fibre weight of use surface / Material utilizado en capa exterior	540 g/m ²
Type d'enduction / Type of bonding / Revestimiento	Enduction d'envers / Back coated
Envers / Backing / Revés	Backing System, Matières recyclées renforcées par un voile de verre, 100% recycled vinyl backing reinforced with glass fiber
Epaisseur totale / Total Thickness / Espesor total	6,6 mm
Masse totale / Total Weight / Peso total	4360 g/m ²
TECHNICAL PERFORMANCES	
Classification (EN 1470)	33 - Commercial Heavy/ LC1
Classement UPEC / (Référentiel NF 186)	Classement:U3SP3E1C0 *
* demande en cours enregistrée sous le n°24006/5 du 17/12/2010 valable 1 an	



N° 0679-CPD-0200
08
EN 14041: 2004
EN 1470

Comportement au feu / Fire rating / Comportamiento al fuego	BflS1
Isol. Acoustique aux bruits de choc / Impact noise reduction / Absorción ruido impacto	ΔL (w) 21 dB
Absorption acoustique / Sound absorption / Absorción acústica	aw = 0,15 (H)
Résistance électrique / Electrostatic properties / Comp. Electrostático	< 2.0 kV < 10 ⁹ Ω
Résistance thermique / Thermal resistance / Resistancia térmica	0,09m ² KW
Solidité à la lumière / Colour Fastness / Solidez de los colores	≥ 7/8
Aptitude chaise à roulette / Castor Chair / Silla de ruedas	Passed R ≥ 2,4