

Acczent Compact

COMPACT RESILIENT FLOORCOVERING



VINYL

Focus



Release your senses...

Acczent Focus

Reality or illusion?

A new generation of flooring for creative projects.

A choice of five original designs.

Dare to colour them!

Explore three worlds of photographic imagery

Acczent Focus allows you to realize the full potential of photographic imagery, from the discreet greys of classic black and white to soothing natural colours and startling colorized designs.

- **Natural:** the reassurance of natural associations, with easily recognized personalities such as green grass and blue water.
- **Black & White:** purity and freedom, with all the subtlety of the classic photographic treatment.
- **Synthetic:** from the surprising to the simply surreal, like acid-yellow grass and pink sand, Acczent Focus can be tailor-made in whatever colour you specify.



remember...



dream...



imagine...

Strength, power and subtlety combined

Acczent Focus brings the power and subtlety of photography to floorcoverings designed to thrive in the most demanding high-traffic commercial applications. Focus features evocative images of natural elements – water, sand, grass, pebbles and leaves – that offer exciting opportunities for creating a mood, for making a statement, for defining a personality.

Combining timeless images with a dramatic twist of colour, Acczent Focus will attract attention and admiration today and into the future.

The tranquillity of Natural

Natural brings colour and reassuring realism to Acczent Focus. These are calm, soothing designs with familiar associations: grass in relaxing greens or tranquil blue water.

With Natural you can give spaces their own distinctive, welcoming personalities, or create and combine themes throughout a building.



FOCUS Natural

Water
3781 005

Sand
3781 004

Grass
3781 002

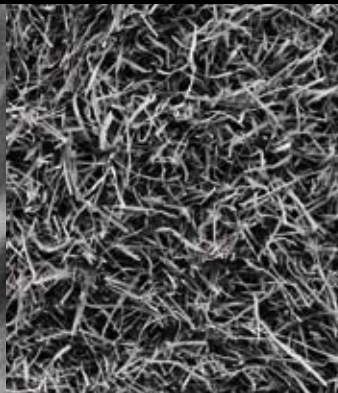
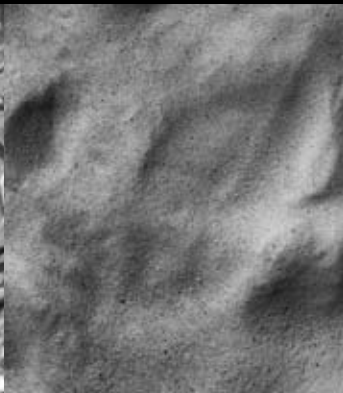
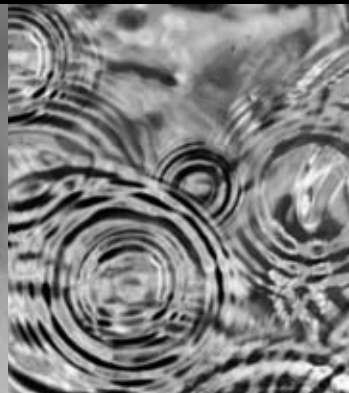
Leaves
3781 001

Pebbles
3781 003

remember...

The magic of Black and White

For many people, black and white remains the ultimate in photographic expression, with its effortless combination of drama and subtlety. Sometimes powerful, sometimes romantic, always pure and timeless, Acczent Focus in Black & White gives you the opportunity to reproduce on floors some of the effects associated with art photography.



FOCUS Black & White

Water
3769 005

Sand
3769 004

Grass
3769 002

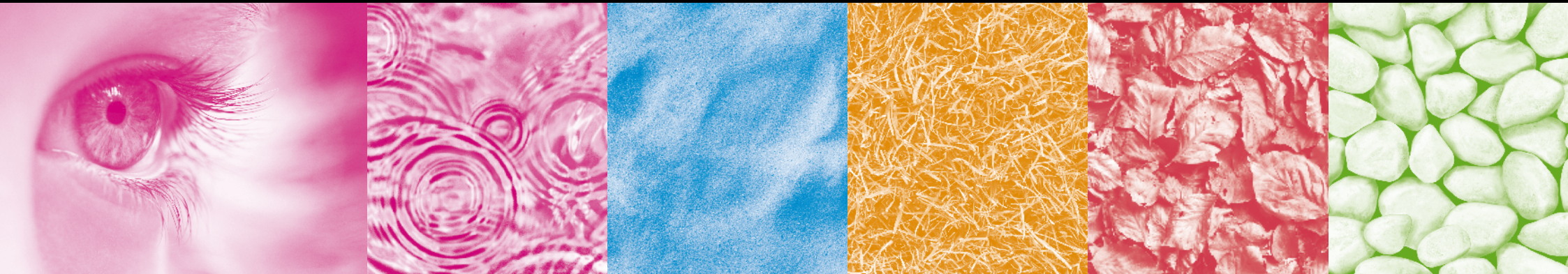
Leaves
3769 001

Pebbles
3769 003

dream...

The vivacity of surrealistic

For the surprising, the surreal, even a suggestion of the psychedelic, choose Focus Synthetic. Imagine sand in an almost shocking pink, or grass in a strongly acid yellow. And imagine the playful designs and sheer excitement you can create with Focus Synthetic.



FOCUS Synthetic

Water

Sand

Grass

Leaves

Pebbles

imagine...

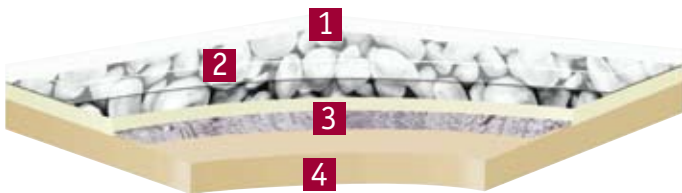
Choose your colour / NCS / PANTONE / RAL / Five design bases to colour / Available on special request from 500 sqm.

Technical features

Tough construction

A tear-resistant solid calendered sheet, with glass fibre non-woven reinforcement, supplies the foundation for Acczent Focus' strength. On top of this is an exceptionally hardwearing, transparent PVC wear layer that is highly resistant to abrasion.

Product construction



- 1 New TopClean XP PUR-reinforcement: very high resistance and easy maintenance.
- 2 0.8 mm pure PVC transparent wear layer: exceptional resistance to abrasion and indentation.
- 3 Glass fibre non-woven reinforcement: excellent dimensional stability.
- 4 Solid homogeneous calendered sheet: optimum resistance to tearing.

TopClean XP:

a new generation of surface treatment

Tarkett features a new generation of more resistant surface reinforcement, TOPCLEAN XP, which makes Acczent Focus much easier to clean without ever needing polish or wax.

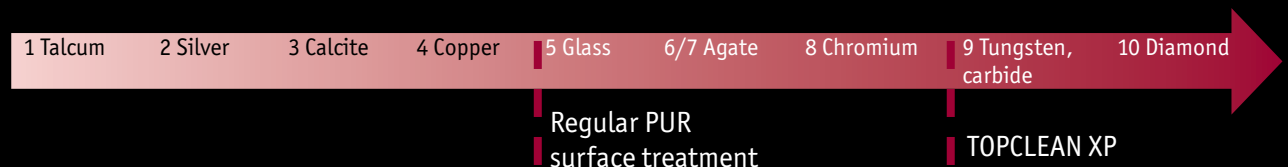
TOPCLEAN XP is a photo-reticulated polyurethane coating, reinforced with alumina oxide. It prevents scratching and abrasion, reduces soiling, removes the need for stripping and polishing and reinforces the floorcovering's resistance to staining by markers, iodine, rubber and shoe soles.



You can be sure that Acczent Focus will continue to satisfy you throughout a long service life.

Surface toughness second only to diamonds

Thanks to the permanent molecular cross-linking of the polyurethane formulation, the TOPCLEAN XP-treated surface is extremely resistant. On the Mohs scale of hardness, only diamonds are tougher.



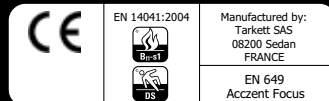
TOPCLEAN XP benefits:

- New-generation PUR reinforcement: TOPCLEAN XP PUR.
- Extreme resistance to scratches and abrasion.
- Excellent resistance to scuffing, soiling and staining.
- Easy, low-cost maintenance: NO WAX, NO POLISH FOR LIFE!
- More than 30% saving on maintenance.
- More than 50% saving on water, detergent and energy.
- Excellent life cycle cost.

TOPCLEAN XP features:

- Alumina oxide micro particles → surface twice as strong as traditional PUR for better resistance to scratches and abrasion (see Mohs scale).
- Stain-blocking agents → excellent resistance to stains (marker, iodine and chemicals).
- Hydrophobic agents → stops dirt adhering and allows faster drying → easier cleaning.

The Mohs scale of hardness characterises the scratch resistance of various materials through the ability of a harder material to scratch a softer material.



Accent Focus

DESCRIPTION

Printed compact flexible vinyl floorcovering. Glass fibre reinforced. New TOPCLEAN XP Polyurethane reinforcement on surface and built-in Sanitized^(R) treatment. In sheet form.

Product standard: EN 649.

Technical data	Standards	Accent Focus
Classification	EN 685 commercial industrial	Classes: 34 43
Total thickness	EN 428	2.00 mm
Wear layer thickness	EN 429	0.80 mm
Total weight	EN 430	3 100 g/m ²
TOPCLEAN XP PUR reinforcement		Yes
Abrasion group	EN 660-1	Group T: < 0.04 mm
Static indentation	EN 433	< 0.05 mm
Furniture leg	EN 424	No damage
Castor chair	EN 425	No damage
Dimensional stability	EN 434	Length + width < 0.10%
Curl resultant to heat	EN 434	< 8 mm
Reaction to fire	EN 13501-1 ASTM E648	B _{fl} s1 glued over any A2 _{fl} or A1 _{fl} substrate (concrete) and over any derivative wood substrate Category 1
Slip resistance	DIN 51130 EN 13893	R9 > 0.3
Electrical properties	EN 1815 EN 1081	< 2 kV on concrete R _i > 10 ¹⁰ ohms
Impact sound reduction	EN ISO 140-8 EN 717/2	ΔL _w = 4 dB
Reduction of in room impact noise	NF S 31-074	L _{n,e,w} = 77 dB
Light fastness	EN ISO 105-B02	> 6
Chemical resistance	EN 423	High resistance
Resistance to bacteria	NF EN ISO 846	Sanitized ^(R) Grade 1 High fungi effect
Thermal resistance Underfloor heating	EN 12524	0.03 m ² K/W Suitable
Colours		Natural: 5 - Black and white: 5 - Synthetic: ∞
Form of delivery	EN 426	Rolls: 23 lm x 2 m

The above information is subject to modification for the benefit of further improvement (12/07).

For more detailed technical information, please contact Tarkett.

Follow Tarkett's installation and maintenance instructions carefully. These instructions are available upon request.

INTELLIGENT FLOORING SOLUTIONS



SYSTEM

Providing not just a product, but a complete functional solution designed to fully meet customer needs.



SERVICE

Supporting customers from first consultation to product installation, and throughout its service life.



SAVINGS

Finding materials, construction and solutions that minimise maintenance requirements, and achieve best life cycle costs.



STYLE & DESIGN

Contributing to atmosphere, state of mind and emotion, to efficiency and sense of well-being.



SUSTAINABILITY & ENVIRONMENT

Taking the lead in promoting measures to help preserve a sustainable environment.

The Tarkett Group

- Sales Offices
- Production Sites
- Recycling units



> **Australia:** Tarkett Australia Pty Ltd – Tel. +61 2 96 34 73 73 > **Austria:** Tarkett Holding GmbH, Niederlassung Wien – Tel. +43 1 47 88 062 > **Baltic States:** Tarkett SAS – Tel. +370 37 262 220 > **Belgium:** S.A. Tarkett NV – Tel. +32 2 520 04 67 > **China:** Tarkett Asia Pacific Limited Shanghai Representative Office – Tel. +86 (21) 60 95 68 38 > **Czech Republic:** Tarkett SAS, org. slozka – Tel. +420-271 001 602 > **Denmark:** Tarkett A/S – Tel. +45 43 90 60 11 > **Finland:** Tarkett Oy – Tel. +358 9 5406 5870 > **France:** Tarkett SAS – Tel. +33 1 41 20 42 49 > **Germany:** Tarkett Holding GmbH, Bereich Objekt – Tel. +49 6233 810 > **Greece:** Tarkett Monoprosopi Ltd – Tel. +30 2 10 576 3889 > **Hong Kong:** Tarkett Asia Pacific Ltd. – Tel. +852 2511 8716 > **Hungary:** Tarkett SAS – Tel. +36 1 437-8150 > **Italy:** Tarkett S.p.A. – Tel. +39 02 893 411 > **Luxembourg:** Tel. +352 949 211 8804 > **Middle East:** Tarkett Middle East – Tel. +961 1 75 2363/4 > **Netherlands:** Tarkett Benelux B.V. – Tel. +31 76 57 80 760 > **Norway:** Tarkett AS – Tel. +47 32 20 92 00 > **Poland:** Tarkett Wykładziny Sp. z o.o. – Tel. +48 22 639 31 66 > **Portugal:** Tarkett SA – Tel. +351 21 427 64 20 > **Russian Federation:** Tarkett Russia – Tel. +7 4 95 777 69 83 > **Slovakia:** Tarkett SAS – Tel. +421 37 6515 404 > **Singapore:** Tarkett Far East – Tel. +65 67 43 53 84 > **South East Europe:** Tarkett Trade d.o.o. – Tel. +381 21 7557 649 • (44) 569 12 21 > **Spain:** Tarkett Floors S.L – Tel. +34 91 358 00 35 > **Sweden:** Tarkett Sverige AB – Tel. +46 771 25 19 00 > **Switzerland:** Tarkett Holding GmbH, Bereich Objekt Schweiz – Tel. +41 043 233 79 24 > **Ukraine:** Tarkett UA – Tel. +380380 (44) 569 12 21 > **United Kingdom:** Tarkett-Marley Floors Limited – Tel. +44 (0) 1622 854 040 > **North America:** Johnsonite – Tel. +1 440 543 8916 > **Tarkett Inc. USA:** Tel. +1 713 869 5811 > **Tarkett International:** Tel. +49 6233 811 755 – Tel. +33 1 41 20 41 01



TARKETT SALES COMPANIES

www.tarkett-commercial.com